

access

VEGETATION
MANAGEMENT
NEWS

ISSUE #13 SPRING 2010

IN THIS ISSUE:

- ClearView™ herbicide launched in Canada
- Spreading the word on invasive species
- Invasive plants added to Milestone label

GOOD NEWS IN THE FIGHT AGAINST INVASIVE PLANTS.

There is good news in the fight against invasive plants this spring. First, Dow AgroSciences just received registration from the Pest Management Regulatory Agency (PMRA) for ClearView™, a new herbicide for industrial vegetation management.

Like Milestone™, ClearView provides excellent control of broadleaf weeds and invasive plants while also offering a favorable environmental and user safety profile to support current industry needs. It is expected to be available at True North Specialty Products later this spring. Learn more on our new web site at www.ivmexperts.ca.

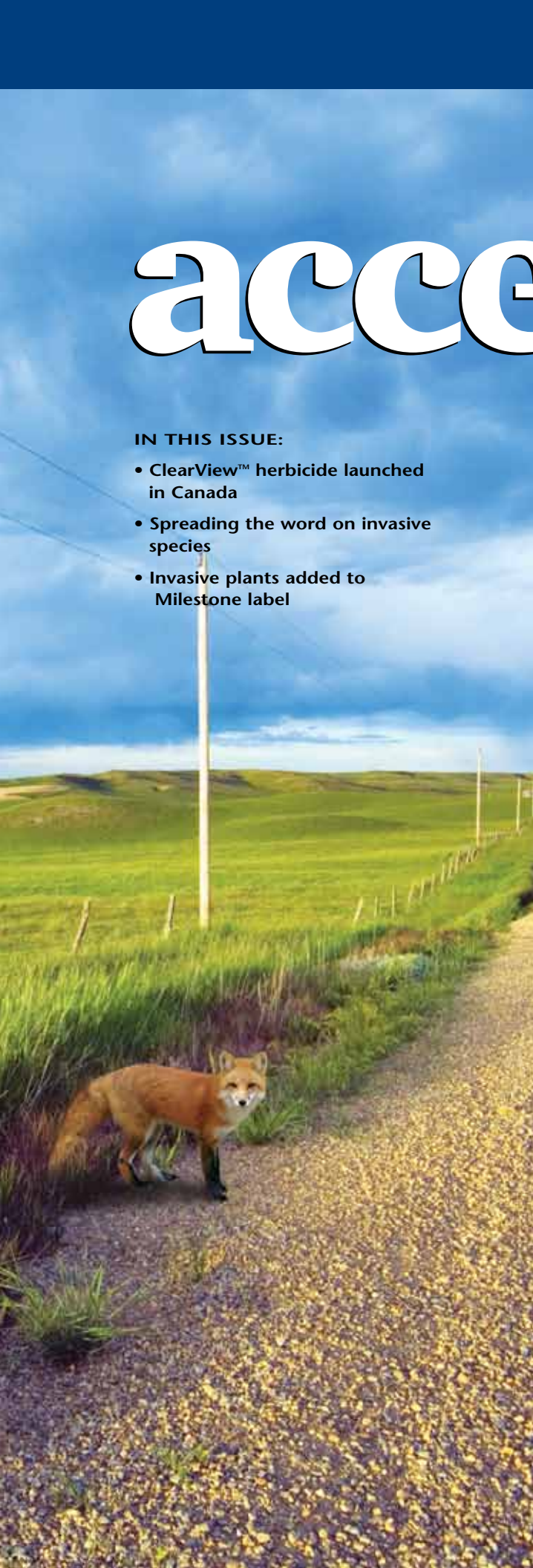
Second, a revised Milestone label approved by the PMRA includes a section on invasive plant management. It's the first time the PMRA has approved this type of section on a herbicide label. It recognizes the increasing profile of invasive plants and will help applicators choose the right control methods.

A few businesses have had the opportunity to pilot test new ClearView herbicide, including Rockyview County, Alberta (see pg 2). Meanwhile, we celebrate with Huron County, Ontario, a Milestone program that has been so effective the amount of herbicide applied is being reduced (see pg 7).

There is also work being done to reduce the environmental footprint left by Dow AgroSciences' herbicide packaging. Innovations implemented this year will reduce waste, energy consumption and the number of trees required to get herbicides to the field.

These positive stories and more are included in this edition. If you have a positive story you'd like to share in a future issue, contact your local Dow AgroSciences Vegetation Management Specialist.

Jerry Olechowski
Marketing Manager,
Dow AgroSciences



AG FIELDMEN FIND NEW CLEARVIEW EFFECTIVE IN ROADSIDE TESTS



Industrial vegetation managers will have a new tool this year to control weeds and shrubs (new ClearView herbicide has just received registration approval from the Pest Management Regulatory Agency (PMRA)). ClearView is a selective post emergent herbicide that controls annual and perennial broadleaf weeds, invasive plants and shrubs on rights-of-way, industrial and other non-crop areas.

Agricultural fieldmen in Alberta had the opportunity to test ClearView last summer. "We were very impressed with it," says Kim Butler, Supervisor of Agricultural Services in Rockyview County. Butler's staff applied ClearView to two acres of roadside in July 2009.

"We sprayed the same road allowance about three years ago with Tordon™ 101. The weeds were coming back and there was quite an infestation of Canada

thistle, perennial sow thistle and a number of annual weeds," Butler says.

Rockyview County handles municipal roadside maintenance on a three year rotation. "We have 8,000 miles of municipal ditch that we are responsible for looking after, so a third of that is handled each year," says Butler.

In the past few years, Rockyview County has relied more on Milestone as the herbicide of choice for roadside weed control. "We're slowly migrating over to products that have an easier environmental profile," Butler says.

Prior to doing the ClearView test, Butler admits he and his staff were sceptical based on past experiences with other products. "But we applied it and we were very impressed," he says. "The best evidence of just how impressed we were is that we're using more of it this year. We'll do a broader test on a more

significant cross section of roadsides – probably about 300 miles of ditch."

ClearView is a much needed tool for managing broadleaf weeds and invasive plants, and a good alternative to Tordon 101. Like Milestone, it has a favorable environmental and user safety profile. It can provide extended control of some weed and shrub species for up to two years following application, and can be applied alone or tank-mixed for broader spectrum control.



"We appreciate that Dow AgroSciences is coming out with these new products, because the older chemistry was getting to be a hard sell," Butler says. "The fact that we can use these new products in closer proximity to water and trees is a major benefit to us as well."

Rockyview County also appreciates the easier environmental profile. "We are a municipality around a major urban area, so we always have to look at using products that are easier on the environment. When we use products like this that have a nicer environmental profile it is good for us as a municipality," Butler says.



HERBICIDES ARE AN EFFECTIVE OPTION WHERE BARE GROUND IS ESSENTIAL

At oil and gas and power and hydro facilities, keeping the ground bare is a matter of safety. Vegetation left unmanaged can create serious operational, safety and fire hazards. But preventing plant growth can be a challenge.

West Country Oilfield Services in Drayton Valley, Alberta has tried all the options. Maintaining bare ground around their oilfield equipment is about fire prevention. "We need fire control on sites where we have physical buildings or equipment that create a fire risk," says General Manager Keith Sanftleben. "We try to achieve zero risk of fire, which means keeping these areas weed free."

Sanftleben says his business has in the past managed bare ground using most of the herbicide options available, including Arsenal, flumioxazin, dicamba, and glyphosate. In the last few years, West Country added a new herbicide option to the control mix: Milestone. The Milestone label includes tank mix options with Vantage™ Plus MAX II or Arsenal for effective weed control on bare ground.

"We're using Milestone in a tank mix to replace dicamba. In our area we have weeds that are controlled fairly well by a product like Milestone," says Sanftleben.

Sanftleben says he looked to Milestone for effective weed control, and also to manage herbicide resistance. He was satisfied with how it worked. "It performed very well," he says.

Last season Sanftleben also tried the new post emergent herbicide ClearView. ClearView is a new product that controls annual and perennial broadleaf weeds, invasive plants and shrubs on rights-of-way, industrial and non-crop areas for up to two years after application.

Sanftleben compared ClearView to Tordon™ 101 on a four hectare roadside site. While Tordon provided stronger brush control, Sanftleben was happy with how ClearView performed on weeds, and he sees a fit for it on the bare ground sites West Country maintains.

"It was fairly quick acting and effective. We were happy with how it performed. We would be interested in seeing what it would look like in a tank mix, but on

its own we were quite happy with it," he says.

Sanftleben found handling both Milestone and ClearView easy, because both products are highly concentrated and used at low rates. "The fact that there isn't a lot of product physically is a nice feature," he says.

For businesses like West Country finding practical control options for bare ground is critical. "The management options are limited. You can hand pick, weed whip or mow, but those options aren't practical because of the cost. Tillage won't solve the problem because you can't go underneath pipes or right up to standing pipes or buildings. It really points to herbicides as the most effective tool," Sanftleben adds.



ALBERTA INVASIVE PLANT COUNCIL SPREADING THE WORD ON INVASIVE SPECIES



As the issue of invasive plants grows, Invasive Plants Councils are working hard to build awareness of how industry and the public can help stop their spread. Invasive species of all types threaten biodiversity, agriculture and other interests – both human and animal.

The Alberta Invasive Plants Council (AIPC) is working to take awareness of the problem to a broader audience in the province. The AIPC is directed by a board of representatives from government agencies, the IVM industry, and non-government groups. New strategies being developed by the council will help educate a larger group of citizens to watch out for invasive plants. “We’re at a time of change related to invasive plants in Alberta and it’s connected with the proclaiming of the new Weed Control Act coming any day now,” says Don Battiste, AIPC Program Director.

Alberta’s new Weed Control Act increases the number of plants listed as restricted from seven to 46, and aligns the wording with federal terminology by changing their name from “restricted” to “prohibited noxious”. “The increased number and type of weeds

recommended for inclusion shows a new awareness of the environmental impact of invasive plants,” says Battiste. “They’re not only impacting agriculture, they impact native rangelands and natural and protected areas.”

Many weeds recommended for inclusion in the new act aren’t present in Alberta yet, but are a problem in adjacent areas, such as British Columbia or Montana. The growing number of plant species to watch out for increases the need for people province-wide to be aware of the issue – especially because some invasive plants are unintentionally propagated by unaware gardeners.

To build awareness, the AIPC is distributing a Weedwise Gardening brochure and developing training presentations to help educate industry and stakeholder groups about best management practices.

To view a list of the world’s worst invasive alien species, visit the Global Invasive Species Database, at: <http://www.issg.org/database>.



INVASIVE PLANT WATCH: ALBERTA

Here are four invasive weeds to look out for this spring, according to the Alberta Invasive Plants Council.

- Native to Europe and Asia, leafy spurge is an aggressive invader that displaces native vegetation by shading and using available water and nutrients. It has an extensive underground root system that makes it very persistent.
- Spotted knapweed is an aggressive invader that can grow in a wide variety of habitats, including gravel pits, stockpiles, power lines, industrial land, railroads, and equipment yards. Its long-lived seeds may be viable in the soil for up to eight years and can germinate at a range of soil depths, moisture levels and temperatures.
- Annual bromes (Japanese brome and downy brome) are difficult to manage because they have a huge seed set and ripen very early. There is currently a need for an effective selective herbicide option to control Japanese and downy brome.
- Oxeye daisy spreads by seed and by short rhizomes under the soil. It has been cultivated as an ornamental, but readily escapes from gardens and forms a dense ground cover, crowding out and preventing regeneration of native plants and grasses. There is a need for selective herbicides to be developed to control oxeye daisy, especially for use in sensitive areas.

INVASIVE PLANTS ADDED TO MILESTONE LABEL FOR 2010

This spring for the first time herbicide applicators will see an Invasive Plant Management section added to a herbicide label in Canada. The Pest Management Regulatory Agency (PMRA) approved an application last fall to add the new section to the Milestone label.

The application was unique because it was based on US data. "Many of the invasive plants listed in the new section do not exist in Canada right now," explains Barry Gibbs, Product Registration Manager with Dow AgroSciences.

Yet having a herbicide that provides control will be important in the early detection and rapid response required if or, more likely when, these invasive plants cross the 49th parallel.

"Invasive plants are probably one of the biggest problems in the agriculture industry right now," says Peter Mohammed, President of Spectrum, Director on the BC Invasive Plants Council and President of IVMA BC. "When you consider the impact to agriculture and on our ecosystems in general, the numbers are staggering



Oxeye daisy

– and the problem is just growing all the time."

Milestone is an important tool to help restore desired plant communities and remove ecologically threatening invasive plants. It can be used to control invasive plants on roadsides and rights of way, in rangeland, permanent pasture, industrial and other non-crop areas of Canada. "It's an attractive product because of its selective nature and its low toxicity profile," says Mohammed.

The updated label for Milestone lists weeds currently included on the US product label in a section called Invasive Plant Management. The PMRA also supported adding some of the invasive plants to the main weeds controlled charts in the Milestone label, including: common ragweed, yellow star thistle, plumeless thistle, musk or nodding thistle, Canada fleabane, horsenettle, perennial sowthistle, oxeye daisy, tall buttercup, cudweed, curly dock, western ragweed, and prickly lettuce.

Invasive plants added to the new Invasive Plant Management section include: Common broomweed, hairy buttercup, tropic croton, tropical soda apple, bull thistle, sulphur cinquefoil, bitter sneezeweed, hairy fleabane, tansy ragwort, tall ironweed, fuller's teasel, and Russian knapweed.

"The addition of an Invasive Plant Management section to a herbicide label recognizes the growing profile of invasive plants," says Barry Gibbs. "It also acknowledges the important role herbicides can play as part of a successful invasive plant management strategy."

"For Dow AgroSciences to put something on their label that directly addresses the issue of invasive plants is incredibly important for us because it raises the profile of our cause and makes it a targeted effort," says Mohammed. "If we can raise the profile and make more people aware of the problem, we'll have more support to help deal with the issue."



Spotted knapweed

INNOVATIONS IN PACKAGING WILL REDUCE ENVIRONMENTAL IMPACT



Innovations in design will reduce the environmental impact of Dow AgroSciences herbicide packaging used for invasive vegetation management.

Beginning in spring 2010, some herbicide boxes produced by AgroSciences will use corrugated material that is greater than 80% post consumer recycled (PCR), an increase from 20% PCR content in the old box material, explains Paul Ouillette, Packaging Engineer with Dow AgroSciences.

The result is reduced waste, reduced energy consumed in the manufacturing process, and less trees required. "When fully implemented for one year, this change will allow us to use an estimated 33,000 less trees than in the previous year," Ouillette says.

If performance expectations are met, Dow AgroSciences expects to convert all packages manufactured in North America to the 80% PCR boxes this summer.

Dow AgroSciences is also rolling out the Jerribox® this spring. This innovative package is adapted from the wine production industry. "It was developed by Scholle Packaging, the makers of the majority of the bag-in-box wines sold around the globe," says Ouillette.

The Jerribox uses a corrugated box with a plastic bag inside that has the same standard 63 mm cap used on many agricultural chemical bottles. The packaging ships flat, and is

delivered to the filling site empty, so 45 empty bags take the same amount of space as six empty bottles. Each pallet will hold more than 1,000 empty bags, more than five times the number of empty 10 L bottles that fit in the same load.

The Jerribox is expected to reduce shipping costs, fuel use and waste, says Ouillette. Garlon RTU is the first product to be offered in a Jerribox. It will be available through retailers in Canada this spring.

ALBERTA PUTS GUIDELINES FOR MILESTONE USE AT WATER'S EDGE IN PRINT

Guidelines for the use of Milestone around water have recently been added to the Alberta Code of Practice for Pesticides. Alberta Environment gave verbal permission for Milestone to be applied up to 1 metre from water's edge under Code when the product was introduced two years ago.

This spring, Jock McIntosh, Pesticide Policy Advisor with Alberta Environment, worked to ensure these guidelines would be included in amendments to the Environmental Code of Practice for Pesticides. "We gave Dow AgroSciences clearance when they first brought Milestone to market two years ago, but industry will feel more comfortable and everybody else too now that it is actually included in the Code," says McIntosh.

Previously, the printed Code of Practice required applicators to seek approval before applying pesticides like Milestone between 1 and 30 metres from the edge of water. The revised code allows Milestone use nearer to water's edge. The guidelines for Milestone are an acknowledgement of the fact that the active ingredient aminopyralid has an easier environmental profile than some products used for IVM.

"Alberta Environment approved the proposed amendments to the code on May 12, 2010. Aminopyralid is now officially referenced, which will provide the clarification required by industry," McIntosh says.

The amended Environmental Code of Practice for Pesticides will be available on the Alberta Environment website and through the Queen's Printer in the near future.

COUNTY IN ONTARIO REDUCES HERBICIDE APPLICATION

*"I do roads, not weeds.
Milestone looks after my weeds."*

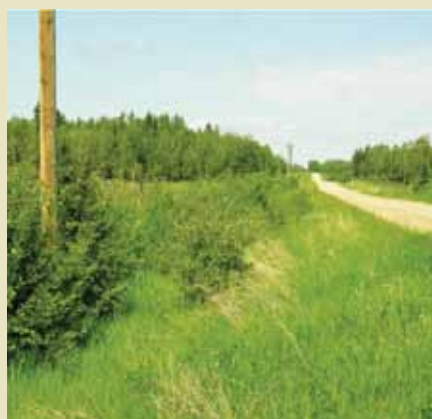
Over the past few years Huron County, Ontario has been cutting back on roadside herbicide application. Why? Because Milestone has successfully reduced the frequency with which application is required, explains Mike Alcock, Engineering Technologist with Huron County at Goderich, ON.

Huron County first applied Milestone in 2007 on 220 kilometres of roadside with a truck sprayer. "We would have tried it in 2006 but we couldn't get any because it sold out so fast," says Alcock.

In Huron County, a range of noxious weeds are a problem on roadsides, including coltsfoot, wild carrot, Canada thistle, knapweed, poison ivy, ragweed and sow thistle. "Milestone works on a wide

spectrum of weeds which makes it easy on me," Alcock says.

In its previous herbicide spray program, Huron County was treating all of its roadsides twice in a three year period – once in the spring and once in the fall.



Using Milestone in combination with roadside vegetation assessment plans (RVAP) which track how well a herbicide application works, the county has reduced its spray program to once every three years plus a spot spray. "We're very happy with Milestone," Alcock says. "Milestone makes it so we spray less than we used to."

Alcock also appreciates the easier environmental profile the product provides. "We have to show that we are being environmentally responsible. That means using environmentally responsible products as well as trying to only spray them where they are needed. Using Milestone, every year we've used less chemical and still got great results," says Alcock. "We're really happy with it."

ACCESS EVENTS

Weeds Across Borders Conference

June 1 – 4, 2010

Sheperdstown, WV, USA

www.weedcenter.org/wab2010

17th International Conference on Aquatic Invasive Species

August 29 – September 2, 2010

San Diego, CA, USA

www.icaais.org/html/info_intro.html

2010 Vegetation Tour & Seminar

September 8 – 9, 2010

Saskatoon, SK

www.ivmamansask.com

2010 IVMAA Fall Workshop

October 6 – 7, 2010

Reed Deer, AB

www.ivmaa.com

3rd Joint Meeting of the Eastern Canada Vegetation Management Associations

October 12 – 15, 2010

Halifax, NB

www.myavama.ca

2011 IVMAA Spring Seminar & Tradeshow

March 1 – 3, 2011

Calgary, AB

www.ivmaa.com

AWARD WILL RECOGNIZE ENVIRONMENTAL STEWARDS IN IVM

Dow AgroSciences is launching an awards program to recognize individuals and organizations that make a significant contribution to the IVM industry in relation to environmental stewardship.

Two Industrial Vegetation Management Environmental Stewardship awards will be presented: one to an individual and one to a business or organization. Judges will consider the management of water, wildlife, vegetation, air and soil, as well as the nominee's leadership and contributions to the sustainability of the industry. To nominate an individual or business go to: www.IVManswers.ca. All nominations must be made by September 31, 2010.

Check out our new website at

ivmexperts.ca

Dow AgroSciences Canada Inc.

2100 – 450 1 ST SW Calgary AB T2P 5H1

Solutions Center: **1.800.667.3852**

Fax: **1.888.296.6188**

Email: **solutions@dow.com**

Website: **www.ivmexperts.ca**

VEGETATION MANAGEMENT SPECIALIST – BRITISH COLUMBIA

Lisa Jarrett Phone: **250.764.0873** Fax: **250.764.0828**
Cell: **250.870.3734** Email: **ljarrett@dow.com**

**VEGETATION MANAGEMENT SPECIALIST – SASKATCHEWAN,
MANITOBA AND ONTARIO**

Ross May Phone: **204.897.5204** Fax: **204.897.5204**
Cell: **204.479.9545** Email: **rwmay@dow.com**

VEGETATION MANAGEMENT SPECIALIST – QUEBEC AND MARITIMES

Michel Tremblay Phone: **514.770.9752** Fax: **519.464.7748**
Cell: **514.770.9752** Email: **mtremblay@dow.com**

VEGETATION MANAGEMENT SPECIALIST – NORTHERN ALBERTA

Vaughn Leuschen Phone: **780.721.3469** Fax: **780.340.3732**
Cell: **780.721.3469** Email: **leuschen@dow.com**

VEGETATION MANAGEMENT SPECIALIST – CENTRAL ALBERTA

Mark Alberts Phone: **403.506.5765**
Cell: **403.506.5765** Email: **malberts@dow.com**

VEGETATION MANAGEMENT SPECIALIST – SOUTHERN ALBERTA

Candice Manshreck Phone: **403.394.6824**
Cell: **403.394.6824** Email: **cmanshreck@dow.com**

MARKETING DEVELOPMENT SPECIALIST

Shawna Ference Phone: **403.660.8763** Fax: **403.735.8819**
Cell: **403.660.8763** Email: **ference@dow.com**

